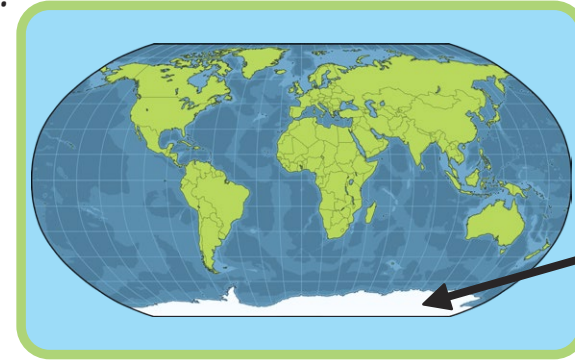


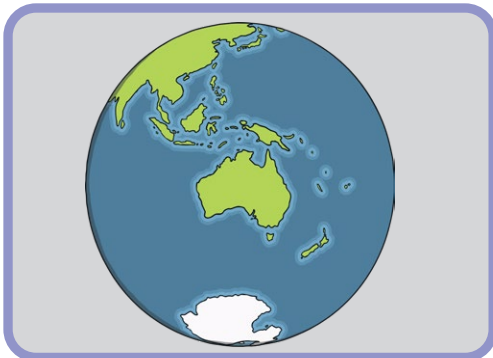
Antarctica Fact Cards

Antarctica is one of the world's seven continents. It is the fifth largest continent. Most of the land is covered by ice. Antarctica is the world's coldest continent.

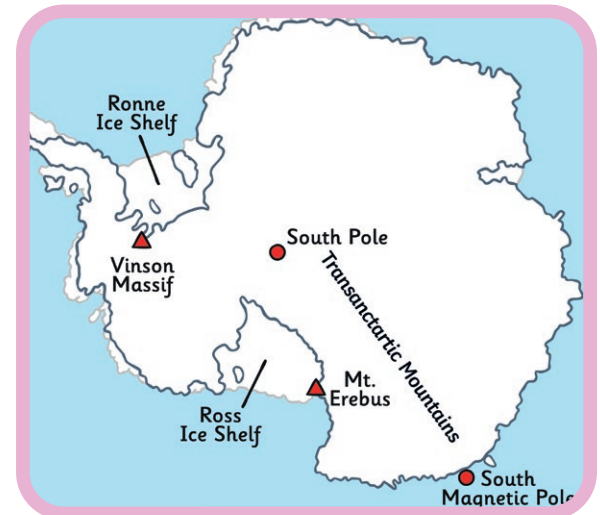


Antarctica

Antarctica is the most southern continent on the planet. It is in the southern hemisphere - the lower half of the world. Antarctica means 'opposite of the Arctic'.

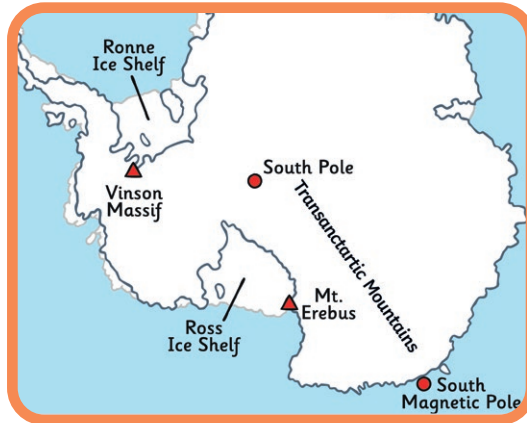


The Transantarctic Mountains divide the continent into east and west.



Antarctica Fact Cards

The highest mountain in Antarctica is Mount Vinson. It is 4,892 metres high.



twinkl.com

Antarctica Fact Cards

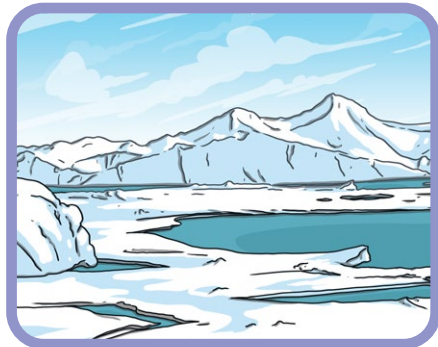
Ice shelves are thick areas of floating ice which are attached to the land. The Antarctic is surrounded by ice shelves, including the Ronne Ice Shelf and the Ross Ice Shelf.



twinkl.com

Antarctica Fact Cards

No one lives in Antarctica all of the time because it is too cold for people to live there for a long time. The average inland temperature is around -57°C .



twinkl.com

Antarctica Fact Cards

The coast is warmer and temperatures can reach 15°C . Many researchers and scientists visit Antarctica to find out more about this continent.



twinkl.com

Antarctica Fact Cards

Many different animals live here including emperor penguins, fur seals and orcas, also known as killer whales.



twinkl.com

Antarctica Fact Cards

Antarctica has six months of daylight in the summer, where it never goes dark. In the winter months it is always dark.



twinkl.com

Antarctica Fact Cards

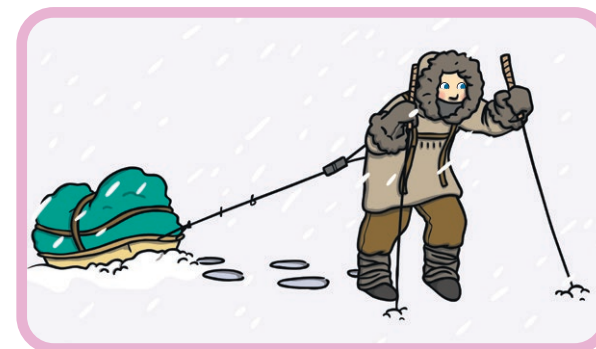
The South Pole is in Antarctica. In 1911, Roald Amundsen was the first person to reach the South Pole.



twinkl.com

Antarctica Fact Cards

The first time that humans set foot on Antarctica was in 1821.



twinkl.com